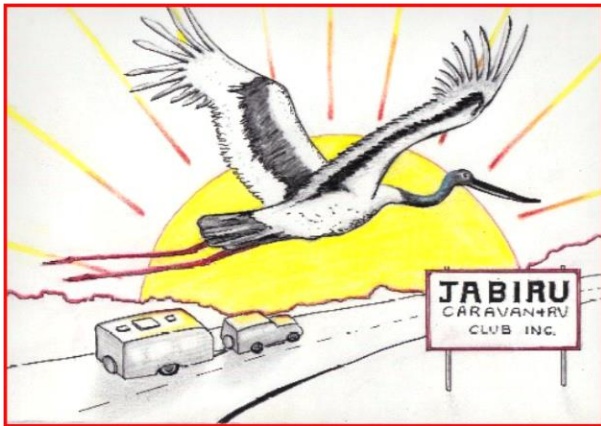


# STORK TALK



NOVEMBER 2019

***"In Perfect Unison"***

## **BIG RIGGEN RATHDOWNEY**

**A really big THANK YOU to RUSSELL, BOB, JEANNETTE & SARAH  
for helping out at the October 2019 rally.**

**Your help was much appreciate by both Stephen and Grace  
while we were away.**

## **BIGRIGGEN PARK RALLY**

Bigriggen Park is located in the Scenic Rim approximately 13 kilometres west of Rathdowney in a lovely bushland setting on the banks of the Logan River that has a lovely swimming pool. The river is also suitable for kayaking. The Park offers both Powered sites with water & Non Powered Sites, an excellent Amenity Block, Dump Point, Fire Pits & Fire wood & Kiosk. The park is very popular with all age groups particularly family groups with children, the park covers a huge area offering plenty of open spaces for children to play & ride their bicycles.





## ***PRESIDENT'S REPORT - BIG RIGGEN PARK RALLY***

BIGRIGGEN PARK was a lovely site for the Rally and the weather was kind to us except for Thursday afternoon's violent thunder storm. As it approached we dismantled the gazebos and headed for our caravans for shelter, fortunately there was only a little bit of very small hail with very strong wind & heavy rain. Luckily no damage was caused to anyone's caravan.

This Rally was small but an extremely enjoyable event as 10 of our members are still away at the National Rally in WA and some others had prior commitments. However we did have seven vans attend, including second time visitors Peter & Marcia Perry. It was great to see them again. They even stayed on for an extra night they loved the park so much.

On Friday after morning tea we all set off on a very pretty drive to the Rail Loop on the Lions Rd, an alternate route from Rathdowney to Kyogle, to view the rail loop on the main Brisbane – Sydney rail line (*the rail line loops around the hillsides to save tunnelling gaining elevation*). Unfortunately we did not see a train but we had a nice picnic lunch at the lookout then travelled back to camp stopping along the way to check out some of the camp sites along the running creek road and stopped at the Rathdowney Lookout to view the village.

Back at camp at 2.00pm Bob started the fires in preparation for the Friday night shared camp oven dinner of Pumpkin Soup, Curried Chicken, and Nacho's, Roast Vegetables & Damper followed by Bread & Butter Pudding and other deserts. What a feast. I must thank everyone for providing the delicious meals and of course a special mention to Bob for managing the fires and being acting Rally Master.

Saturday Lunch was only a short drive thru an Olive Grove to the Rathlogon Shed Café for a really beautiful lunch. The Café also had a very interesting craft shop that sold various items, including their olive products and even had ice cream.

On returning to camp we all needed a rest or nap before Happy Hour which was fun as we all told stories about growing up & first jobs, then later Bob announced we had a little bit of fire wood left & was not going to take it home. Albert went for a walk and came back with an arm full of branches. Albert's action prompted some more of us to go scrounging for dry branches to burn and we kept the yarns and fire going till about 9.00 pm.

I must say it was a very successful and enjoyable Rally. Thanks again to all those that attended.

Next Rally is at Imbil Camping Retreat (*Caravan Park*) hope to see a good attendance as it really is a great spot and ticks all the boxes. **Check the activities page for details.**

Russell

President.

**ALL CORRESPONDENCE TO THE  
SECRETARY: - Juliet Raymond  
Mob: - 0416 729 968  
Email:  
jabirucaravanrvclub@gmail.com**

***LEOD FOR BIGRIGGEN RALLY  
IS \$ 1279.00***

### THE JABIRU COMMITTEE

PRESIDENT-	Russell McCowan	0418 816 707
VICE PRESIDENT-	Aivars Dreimanis	0403 248 529
SECRETARY-	Juliet Raymond	0416 729 968
TREASURER-	Grace Costello	0419 701 507
RALLY MASTER-	Steve Costello	0419 004 822
VENUE CO-ORDINATOR-	Bob Richardson	0481 162 112
EDITOR-	Grace Costello	0419 701 507

### RAFFLE PRIZE ROSTER

**PRIZE IS TO BE BETWEEN \$25 & \$30.**

If it is your turn to provide the Raffle prize & you cannot attend that rally then you have two options:

1. Swap your turn with another couple, or
2. Send in the prize with another member attending the Rally.

**THE NOVEMBER 2019 ROSTER IS: LORRAINE TAYLOR**

December - Denis & Carolyn Healy  
 January 2020 - Graham & Lorraine Genner  
 February - Barry & Margaret Chesterfield  
 March - Wayne Wootton & Hazel Crewe

April - Winton & Robyn McCormack  
 May - Barry & Sue Massingham  
 June - Sepp & Marianne Henseler  
 July - Mal & Marclain Lawless

### **OUR CARE PERSON**

**Sylvia Mitchell**

Mobile **0418 816 707**

Email: [russellandsylvia@claremontresort.net.au](mailto:russellandsylvia@claremontresort.net.au)

Just let Sylvia know if you know of any of our members who are unwell so we may offer our best wishes or support.

**BEST WISHES TO ALL OUR MEMBERS THAT ARE NOT FEELING THE BEST OR HAVING OPERATIONS - A QUICK RECOVERY TO ALL**

**We received the following message regarding those who were at the Longest Line in Barcaldine in May 2019 - the record was achieved.**

### **Congratulations new Guinness World Record holders**

Well done everyone thank you for your support of our event and the generous support of all the businesses in Barcaldine and the schools though funds raised. This record belongs to each and every one of you. Without your participation this would not have been possible. (More to come!)

**Congratulations all of you!!!!!!!!!!!!!!!!!!!!!!**

**Lion Len Waddington**

**President: AMLC**



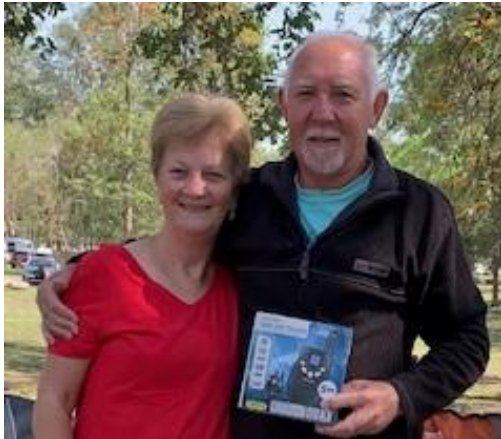
## RAFFLE WINNERS

### Raffle Prize :

Walkie Talkies  
Donated by Don & Glenys

Won by :

**PETER & MARCIA PERRY**



### Van Prize :

One night free camp - won by

**BOB & JEANNETTE RICHARDSON**  
**VAN NO. 55**



## CELEBRATIONS

### BIRTHDAY CELEBRATIONS

Happy Birthday to :

Bill Clark & Russell McCowan

(Garry Lane, Carolyn Healy, Don Hastie & Rhonda Dreimanis - not present)



### ANNIVERSARY CELEBRATIONS

Congratulations & Happy Anniversary

Albert & Sarah Pauly

(Brian & Lyndell Manthey not present)



## NOVEMBER BIRTHDAYS AND ANNIVERSARIES



**Ian Aland – 8<sup>th</sup>**

**Toni Raabe – 17<sup>th</sup>**

**Arlene Hallen – 23<sup>rd</sup>**

### Garry & Chris Lane - 3<sup>rd</sup>

## Grace & Steve Costello - 28<sup>th</sup>

[illegible]

## JABIRU NOTICEBOARD

**FOR SALE :**

Club Shirts - Size M and Ladies 16 - \$ 10.00 each

Club Jackets - Size Medium and Small - \$ 20.00 each

Enquiries to Russell on 0418 816 707

(On behalf of Ross & Sue Bruce)

=====

## NOTICE TO MEMBERS

Please remember to request “**leave of absence**” **in writing to the Secretary,**  
before going on extended leave of over 2 months or more.

Thanks, Juliet

## UHF RADIO SIGNS FOR VANS

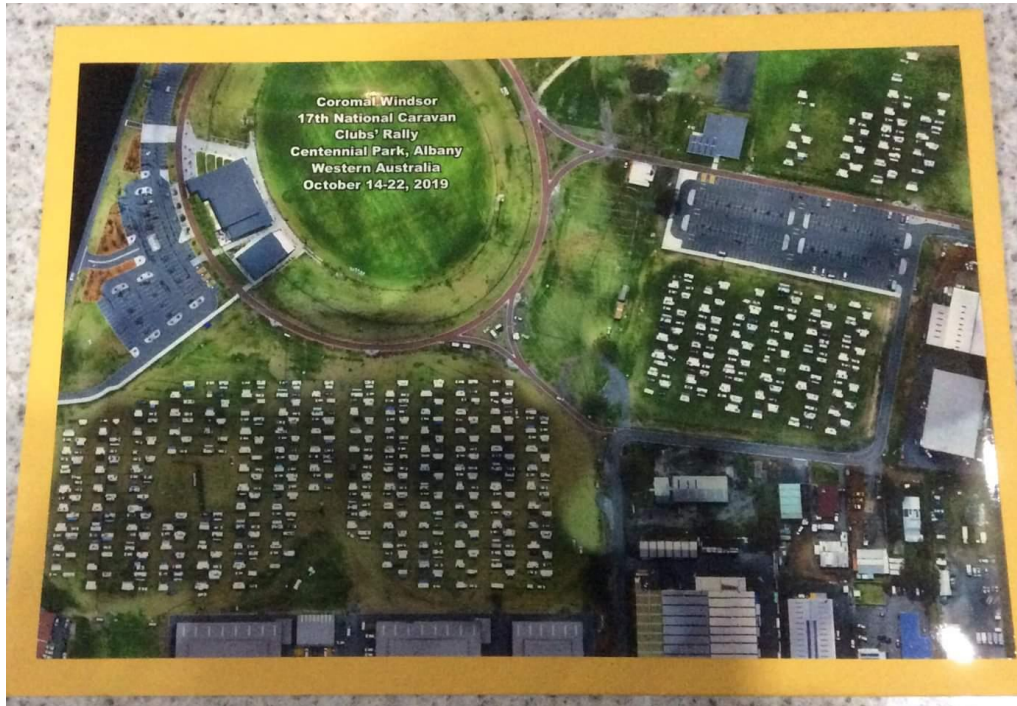
Fay's grand-daughter is making UHF radio signs for caravans.

If you are interested please call Fay on 0429 662 490.

#####

## Some Photos from National Rally in Albany WA

This post was copied from Albany Wanderers Facebook Page regarding the National Rally in WA - Drone view of 17th National Caravan Rally, Centennial Park, Albany. Most of us are in the section in the left hand corner of the photo. Wayne, Hazel and Bella and Ian, Cosette and Daisy are in the top right hand corner. All the fur babies are in the one area. 402 vans in total.





## MEMBERS PROFILE

### LORRAINE TAYLOR



Where were you born? **SYDNEY**

Where did you go to school?

PRIMARY – **Sylvania & Oyster Bay  
in Sydney**

HIGH SCHOOL - **Taree High School**

What is your favourite Colour? **BLUE**

What is your favourite Sport? **Hockey**

What is your favourite song? “**He Lives**”

What is your favourite food? **Potato Crisps**

What is your favourite Cartoon Character?

**Tweety**

One thing you can't live without?

**Family.**

What do you most hate? **Hate deceitfulness.**

One word that best describes you?

**Hopefully kind**

Naughtiest thing you did at school? **Refused to learn French and spent 12 months writing 100 lines every night with “I must do my French homework” Did the lines and no homework.**

Your Motto - **Treat others how you wish to be treated.**

## FUTURE RALLY DATES

DECEMBER 2019 - **ESK CARAVAN**

**PARK - 11<sup>th</sup> to 16<sup>th</sup>**

This is our **CHRISTMAS RALLY.**

### 2020

JANUARY 2020 - **DAYBORO**

**SHOWGROUNDS - 15<sup>th</sup> to 20<sup>th</sup>**

FEBRUARY 2020 - **GYMPIE**

**SHOWGROUNDS - 12<sup>th</sup> to 17<sup>th</sup>**

MARCH 2020 - **GOOMBURRA**

**VALLEY - 18<sup>th</sup> - 23<sup>rd</sup>**

APRIL 2020 - **KYOGLE SHOW**

**GROUND (NSW) - 15<sup>th</sup> - 20<sup>th</sup>**

This is our 6<sup>th</sup> Birthday Rally

**WATCH THIS SPACE FOR MORE  
INFORMATION RE RALLIES**

DISCLAIMER : The information contained in this magazine for Jabiru Caravan & RV Club Inc is not necessarily the views of the Committee or the Editor. All contributions are welcome and should be sent to the Editor, who reserves the right to summarise or amend items without notice.

**Action**  
Mobile Caravan & Trailer Repairs  
Servicing • Painting • Insurance Work



Terry  
m 0419 703 189

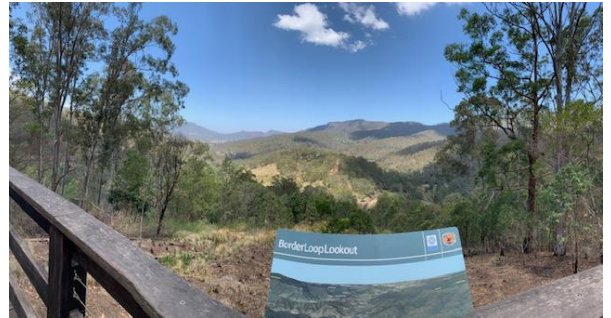
*Bayside* Rod & Anna  
**Caravan Spares**  
Parts and Accessories



Shop 2B, 8-16 Redland Bay Road  
Capalaba, QLD 4157  
**Phone: 07 3390 3940**  
[www.baysidecaravanspares.com.au](http://www.baysidecaravanspares.com.au)  
[rod@baysidecaravanspares.com.au](mailto:rod@baysidecaravanspares.com.au)

## BIGRIGGEN, RATHDOWNEY

**FRIDAY - Drive to Lions Road to Rail Loop and picnic lunch.**



**Camp Oven Dinner was a great hit for all**



**"IN PERFECT UNISON"**

**NOVEMBER 2019**



Some candid shots from the weekend



~~~~~

**DIRECTIONS TO IMBIL CAMPING RETREAT for November 2019 rally** : Camp is 160km from Brisbane along Bruce Highway.  
Take exit 244 to Imbil.

### **CAMPING INFORMATION :**

You will notice the Rates have been reduced from the original figures

### **BOOKING INSTRUCTIONS FOR IMBIL CARAVAN PARK CAMPING RETREAT ARE AS BELOW**

All Members going to the IMBIL Rally are required to phone the Camping Retreat (Caravan Park) **0447 135 471** Direct to book your stay i.e number of days staying & pay a deposit to the value of 1 day. The balance of the fees are payable on arrival at the Camp Ground. Prices are listed below.

2 People power & water \$31.50 Per Day

1 Person power & water \$18.00 Per Day

2 People **NO** power or water \$22.50 Per Day

**Please Note There are only 7 powered sites allocated to our Club but plenty of unpowered sites available so if you would like a powered site Book early**

## **IMBIL CAMPING RETREAT 13<sup>th</sup> – 18<sup>th</sup> NOVEMBER 2019**

**ADDRESS : 5 Imbil Island Rd Imbil .**

**Camp Site Fees : \$31.50 Per couple Per Van per night. Power & water**

**\$18.00 Per single person per night power & water**

**\$22.50 Per Couple Per Van NO Power & Water**

**Extra hoses and leads may be required. Pets allowed - On leads at all times.**

**\$20.00 Refundable BOND per Dog & must be restrained at all times**

**Dump Point On Site**

**Access to Camp Ground available from Wednesday till Monday**

**THURSDAY** - Arrive and set-up. Check in with **Rally Master Steve Costello 0419004822**

**4.00pm** - Happy Hour Meet Greet. Rundown of activities by Russell & Bob

**6.00pm** - Dinner - bring your own. BBQ supplied.

Later- Yarns around the camp fire - **IF NO FIRE BAN IN PLACE**

**FRIDAY** - **7.00 am** - Walkers - all are welcome to join.

**9.30 am** - Morning Tea

**10.00am** - Explore Imbil Township & (Craft Shops)

**12.00pm** Lunch back at camp or in town, (Relax or explore more of Imbil Go Swimming)

**4.00pm** - Happy Hour/Afternoon Tea.

**6.00pm** - Dinner Bring your own.

Later - Yarns around the camp fire - **IF NO FIRE BAN IN PLACE**

**SATURDAY** - **7.00am** - Walkers - all are welcome to join.

**10.00 am** - Morning Tea

**10.30am** - **QUARTERLY GENERAL MEETING.**

**12.00 noon** - Lunch at Camp or up the street

**3.00 pm** - Disc Bowls

**4.00pm** - Happy Hour/Afternoon tea.

**6.00pm** - Dinner - AT the Railway Hotel Imbil (Walking distance from Camp)

- Cards - board games and puzzles available at all times.

Later - Yarns around the camp fire - **IF NO FIRE BAN IN PLACE**

**SUNDAY** - **8.15 am - 8.45am.** - Our usual migration to settle our week-end accounts.

Don't forget to purchase your raffle tickets.

**9.00 am** - Morning Tea Roundup of the Rally. Talk on next rally.

**The Jabiru activities are pleasure based & NOT compulsory - attendance is your choice.**

**HOWEVER FUN IS MANDATORY**

**TRAVEL SAFELY!!!!!!!**

**NEXT RALLY IS DECEMBER 11<sup>th</sup> - 16<sup>th</sup> AT ESK CARAVAN PARK**

**OUR !! CHRISTMAS !! RALLY**